



**Special
TYRES**



ADD: ROOM1401,BUILDING NO.2,SHENGHE MANSION,
NO.58 SHANDONGTOU ROAD, QINGDAO, CHINA 266100
Tel: 86-532-55579147, 86-532-55579148
Fax: 86-532-55579145
E-mail: info@ketertyre.com

QINGDAO KETER TYRE CO., LTD

INTRODUCTION

Keter is located in Qingdao, Shandong, where is the largest tyre producing base of China, specializes in exporting various tyres.

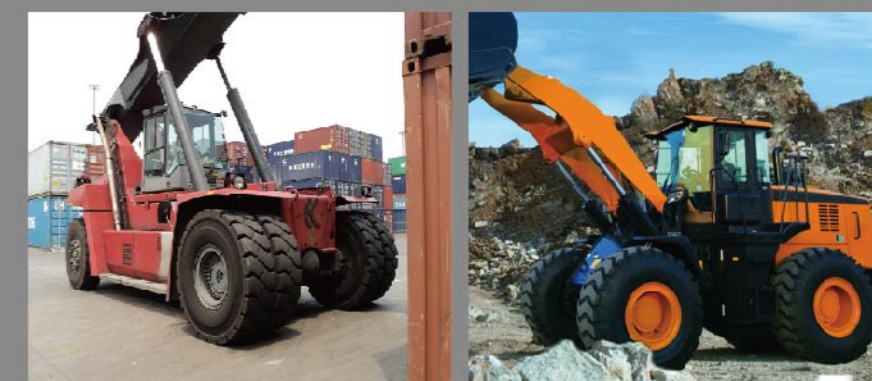
The tyre of Keter, is a new high-tech product promoted by our company. Our technical team directly involves in product development, quality control and on site management of production. Keter is willing to make customized product development as long as you need it.

Keter believes "The value of commodity is the key to making purchase", so we persist in supplying our clients with the most suitable products, but not the most expensive. All in all, Keter is waiting for your kind attention and precious feed back. We anticipate establishing long-term stable business relationship with you on the principle of mutual benefit.

PRODUCT MANUAL

CONTENTS

PORT USE TYRES	03
TRAILER TYRES	08
OTR TYRES	09
SOLID TYRES	11
FORKLIFT TYRES	14
UNDERGROUND MINING TYRES	16
SKID STEER TYRES	20
OTHERS	22



OEM:



Top 1 bias tyres in China





E-4A

PORT USE TYRES



E-4

SIZE	PR	PATTERN NO.	TYPE	T.D. (mm)	STD. RIM	INFLATION PRESSURE	LOAD CAPACITY AT VARIOUS SPEED										S.W. (mm)	O.D. (mm)
							0km/h Static	Creep Creep	5km/h 3mph	10km/h 5mph	15km/h 9mph	20km/h 12mph	25km/h 15mph	30km/h 19mph				
18.00-25	40	E-4	TL	69	13.00/2.5	1000 kPa 145 psi	kg lbs	30600 67470	27200 59980	24650 54350	22950 50610	22100 48730	21590 47610	21250 46860	21080 46480	526	1673	
16.00-25	36	E-4	TL	62	11.25/2.0	1100 kPa 160 psi	kg lbs	24090 53105	21415 47205	19470 42915	18060 39810	17400 38360	16980 37440	16705 36840	16535 36470	432	1548	
16.00-25	32	E-4	TL	62	11.25/2.0	1000 kPa 145 psi	kg lbs	22100 48730	19650 43320	17800 39240	16600 36595	16000 35280	15600 34430	15350 33880	15195 33540	432	1548	
16.00-25	28	E-4	TL	62	11.25/2.0	900 kPa 130 psi	kg lbs	20700 45640	18400 40570	16675 36770	15525 34230	14950 32970	14605 32200	14375 31700	14260 31440	432	1548	
14.00-25	28	E-4	TT	57	10.00/1.5	1000 kPa 145 psi	kg lbs	18000 39690	16000 35280	14500 31970	13500 29770	13000 28670	12700 28000	12500 27560	12400 27340	386	1417	
14.00-24	32	E-4	TL	57	10.00	1100 kPa 160 psi	kg lbs	19605 43220	17430 38420	15845 34925	14700 32400	14160 31200	13820 30450	13600 29960	13460 29660	386	1417	
14.00-24	28	E-4	TT/TL	57	10.00	1000 kPa 145 psi	kg lbs	18000 39690	16000 35280	14500 31970	13500 29770	13000 28670	12700 28000	12500 27560	12400 27340	386	1417	
12.00-24	24	E-4	TT	54	8.5	1000 kPa 145 psi	kg lbs	13600 29980	12150 26785	11000 24250	10250 22595	9850 21715	9650 21265	9500 20940	9400 20720	333	1300	
12.00-20	24	E-4	TT	45	8.5	1000 kPa 145 psi	kg lbs	14260 31430	12700 28000	11510 25370	9800 21600	9440 20800	9230 20340	8250 18180	8180 18030	340	1173	
10.00-20	18	E-4	TT	40	7.5	1000 kPa 145 psi	kg lbs	9630 21220	8560 18870	7780 17150	7255 16000	6990 15400	6830 15050	5520 12160	5480 12080	300	1097	

SIZE	PR	PATTERN NO.	TYPE	T.D. (mm)	STD. RIM	INFLATION PRESSURE	LOAD CAPACITY AT VARIOUS SPEED										S.W. (mm)	O.D. (mm)
							0km/h Static	Creep Creep	5km/h 3mph	10km/h 5mph	15km/h 9mph	20km/h 12mph	25km/h 15mph	30km/h 19mph				
18.00-33	40	E-4A	TL	69	13.00/2.5	1150 kPa 165 lbs	kg lbs	35600 78480	31670 69800	28700 63270	26700 58860	25710 56660	25120 55360	24700 54450	24500 54000	509	1860	
18.00-25	40	E-4A	TL	68	13.00/2.5	1000 kPa 145 psi	kg lbs	30600 67470	27200 59980	24650 54350	22950 50610	22100 48730	21590 47610	21250 46860	21080 46480	528	1684	





L-4S

SIZE	PR	PATTERN NO.	TYPE	T.D. (mm)	STD. RIM	INFLATION PRESSURE	LOAD CAPACITY AT VARIOUS SPEED										S.W. (mm)	O.D. (mm)
							0km/h Static	Creep Creep	5km/h 3mph	10km/h 5mph	15km/h 9mph	20km/h 12mph	25km/h 15mph	30km/h 19mph				
18.00-25	40	L-4S	TL	58	13.00/2.5	1000 kPa 145 psi	kg lbs	30600 67470	27200 59980	24650 54350	22950 50610	22100 48730	21590 47610	21250 46860	21080 46480	526	1673	

PORT USE TYRES



E-3A

SIZE	PR	PATTERN NO.	TYPE	T.D. (mm)	STD. RIM	INFLATION PRESSURE	LOAD CAPACITY AT VARIOUS SPEED										S.W. (mm)	O.D. (mm)
							0km/h Static	Creep Creep	5km/h 3mph	10km/h 5mph	15km/h 9mph	20km/h 12mph	25km/h 15mph	30km/h 19mph				
21.00-25	44	E-3A	TL	42	15.00/3.0	1150 kPa 165 psi	kg lbs	39580 87230	35180 77530	31860 70230	29950 66000	28480 62770	27800 61270	27360 60300	27140 59810	572	1750	
21.00-25	42	E-3A	TL	42	15.00/3.0	1030 kPa 150 psi	kg lbs	37370 82360	33220 73210	30200 66600	28000 61710	27000 59500	26360 58100	25940 57170	25730 56700	572	1750	
18.00-25	44	E-3A	TL	41	13.00/2.5	1030 kPa 150 psi	kg lbs	32290 71170	28700 63250	25990 57300	24110 53140	23240 51220	22700 50000	22340 49230	22160 48840	510	1636	
18.00-25	40	E-3A	TL	41	13.00/2.5	1000 kPa 145 psi	kg lbs	30600 67470	27200 59980	24650 54350	22950 50610	22100 48730	21590 47610	21250 46860	21080 46480	510	1636	



PORT USE TYRES



KT889

KT218

PORT USE TYRES



L-5S

SIZE	PR	PATTERN NO.	TYPE	T.D. (mm)	STD. RIM	INFLATION PRESSURE	LOAD CAPACITY AT VARIOUS SPEED									S.W. (mm)	O.D. (mm)	
							0km/h	Creep	5km/h	10km/h	15km/h	20km/h	25km/h	30km/h	S.W. (mm)			O.D. (mm)
							Static	Creep	3mph	5mph	9mph	12mph	15mph	19mph				
21.00-25	40	L-5S	TL	97	15.00/3.0	1000 kPa 145 psi	kg lbs	36386 80230	32343 71320	29311 64630	27290 60170	26279 57950	25672 56610	25268 55720	25066 55270	617	1798	
18.00-25	40	L-5S	TL	85	13.00/2.5	1000 kPa 145 psi	kg lbs	30600 67470	27200 59980	24650 54350	22950 50610	22100 48730	21590 47610	21250 46860	21080 46480	538	1673	
14.00-24	28	L-5S	TT	74.5	10.00	1000 kPa 145 psi	kg lbs	18000 39690	16000 35280	14500 31970	13500 29770	13000 28670	12700 28000	12500 27560	12400 27340	386	1417	
12.00-20	28	L-5S	TT	67	8.5	1030 kPa 150 psi	kg lbs	13440 29620	12040 26530	10975 24200	10250 22590	9910 21840	9690 21355	9520 20980	9400 20710	330	1173	
10.00-20	18	L-5S	TT	58	7.5	1000 kPa 145 psi	kg lbs	9630 21220	8560 18870	7780 17150	7255 16000	6990 15400	6830 15050	5520 12160	5480 12080	300	1097	
8.25-15	24	L-5S	TT	52	6.5	1030 kPa 150 psi	kg lbs	6070 13380	5400 11900	4900 10800	4550 10030	4390 9670	4280 9430	4200 9250	4100 9030	260	864	

SIZE	PR	PATTERN NO.	TYPE	T.D. (mm)	STD. RIM	Max Load		INFLATION PRESSURE		S.W. (mm)	O.D. (mm)
						(kg)	(lbs)	(kpa)	(psi)		
11-22.5	12	KT889	TL	11.0	8.25	2500/2180	5510/4805	590/520	85/75	279	1054
11-22.5	14	KT889	TL	11.0	8.25	2800/2430	6175/5355	690/620	100/90	279	1054
11-22.5	16	KT889	TL	11.0	8.25	3000/2650	6610/5840	790/720	115/105	279	1054
10.00-20	14	KT218	TL	10.5	7.5	2800/2430	6175/5355	690/620	100/90	278	1055



TRAILER TYRES



G-2/L-2

E-3C/L-3C

E-3B/L-3B

OTR TYRES



E-3/L-3

SIZE	PR	PATTERN NO.	TYPE	T.D. (mm)	STD. RIM	Max Load		INFLATION PRESSURE		SPEED (mpn)	S.W. (mm)	O.D. (mm)
						(lbs)	(kg)	(psi)	(psi)			
23.5-25	24	E-3/L-3	TT/TL	33	19.50/2.5	27550	12459	69	475	5	595	1615
23.5-25	20	E-3/L-3	TL	33	19.50/2.5	24030	10900	54	370	5	595	1615
23.5-25	16	E-3/L-3	TT	33	19.50/2.5	20870	9465	46	320	5	595	1615
20.5-25	20	E-3/L-3	TL	29	17.00/2.0	20940	9500	65	450	5	520	1490
20.5-25	16	E-3/L-3	TT	29	17.00/2.0	17040	7730	50	345	5	520	1490
17.5-25	20	E-3/L-3	TL	30	14.00/1.5	18180	8245	83	570	5	445	1350
17.5-25	16	E-3/L-3	TT	30	14.00/1.5	15470	7015	67	460	5	445	1350
8.25-16	12	E-3/L-3	TT	16.5	6.50H	1750	795	36	250	5	235	835
7.50-16	12	E-3/L-3	TT	16	5.50F	1565	710	30	205	5	205	785

SIZE	PR	PATTERN NO.	TYPE	T.D. (mm)	STD. RIM	Max Load (lbs)		INFLATION PRESSURE (psi)		SPEED (mpn)	S.W. (mm)	O.D. (mm)
14.00-24	16	G-2/L-2	TL	25.4	10.00	16100	7300	80	550	5	393	1346
14.00-24	12	G-2/L-2	TL	25.4	10.00	13900	6305	62	430	5	393	1346
13.00-24	16	G-2/L-2	TL	25.4	8.00	14300	6485	87	600	5	358	1277
13.00-24	12	G-2/L-2	TL	25.4	8.00	12300	5580	65	450	5	358	1277
15.5-25	16	E-3C/L-3C	TL	28.5	12.00/1.3	12345	5600	78	540	5	1125	1325
9.00-20	14	E-3B/L-3B	TT	25	7.0	5510	2500	101	700	30	259	1038





TR-1 SR-1

SOLID TYRES



SR-2 G-2 SM-2 TR-6

SIZE	PATTERN NO.	TYPE	T.D. (mm)	SPEED (km/h)	MAX LOAD		S.W. (mm)	O.D. (mm)
					(kg)	(kg)		
7.00-12	SR-2	MOLDED-ON SOLID TIRES)	16	10	3010	2180	176	667
5.00-8	SR-2		13	10	-	1100	125	464
7.00-12WP	SM-2	MOLDED-ON SOLID TIRES	-	10	3010	2180	224	682
7.00-12	SM-2		-	10	3010	2180	178	665
6.50-10	SM-2		-	10	2900	2100	178	595
6.00-9	SM-2		-	10	1920	1390	160	541
18X7-8	SM-2		-	10	-	1870	168	460
5.00-8	SM-2		-	10	-	1100	127	465
305/76-254	SM-2		-	6	450	450	76	304
15.5/17.5-25	G-2	MOLDED-ON SOLID TIRES	72	5	7150	-	390	1325
13.00/14.00-24	G-2		67.5	5	5990	-	330	1283
8.25-15	TR-6	MOLDED-ON SOLID TIRES	35	5	3405	-	236	840

SIZE	PATTERN NO.	TYPE	T.D. (mm)	SPEED (km/h)	MAX LOAD		S.W. (mm)	O.D. (mm)
					(kg)	(kg)		
12.00-20	TR-1	MOLDED-ON SOLID TIRES	47	10	9800	7100	292	1145
300-15	TR-1		40.5	10	5980	4330	305	839
250-15	TR-1		40	10	4360	3155	250	729
28X9-15	TR-1		40	10	3790	2745	221	697
7.00-12	TR-1		33	10	3010	2180	178	676
6.50-10	TR-1		31	10	2900	2100	178	592
18X7-8	TR-1		26.5	10	-	1870	168	460
23X10-12	TR-1		29.5	10	3770	2900	254	592
16X5	SR-1		Non-Marking Tires	3	5	1315	1315	127
12X4	SR-1	3		5	680	680	100	309



SOLID TYRES



KT886

SOLID TYRES



KT669

SIZE	PATTERN NO.	TYPE	T.D. (mm)	STD. RIM	SPEED (km/h)	MAX LOAD		S.W. (mm)	O.D. (mm)
						(kg)	(kg)		
28X9-15	KT669	RESILIENT TIRES	25	7.0	10	4060	3125	209	694
7.00-12	KT669		25	5.00S	10	3105	2390	159	644
6.50-10	KT669		23.5	5.00F	10	2715	2090	153	566
6.00-9	KT669		21.5	4.00E	10	1975	1520	139	524
18X7-8	KT669		22.5	4.33R	10	2430	1870	160	447
5.00-8	KT669		24	3.00D	10	1255	965	113	456

SIZE	PR	PATTERN NO.	TYPE	T.D. (mm)	STD. RIM	Max Load		INFLATION PRESSURE		SPEED (mpn)	S.W. (mm)	O.D. (mm)
						(lbs)	(kg)	(psi)	(kpa)			
300-15RG	22	KT886	TT	29.5	8.0	15775	7155	150	1030	15	295	840
250-15RG	20	KT886	TT	28.5	7.5	10100	4580	150	1030	15	245	740
8.25-15RG	16	KT886	TT	32	6.5	10165	4610	140	930	15	242	870
28X9-15/8.15-15RG	24	KT886	TT	27.5	7.0	12500	5670	175	1200	15	221	706
28X9-15/8.15-15RG	16	KT886	TT	27.5	7.0	7750	3115	130	1000	15	221	706
7.00-12RG	14	KT886	TT	32.5	5.00S	6535	2965	145	1000	15	192	683
6.50-10RG	12	KT886	TT	31.5	5.00F	4740	1860	140	970	15	178	597
6.00/6.90-9RG	12	KT886	TT	26	4.00E	4130	1675	150	1030	15	168	555
5.00-8/5.70-8RG	10	KT886	TT	23	3.00D	2535	1150	150	1000	15	142	468



FORKLIFT TYRES



KT668

FORKLIFT TYRES



KT882

SIZE	PR	PATTERN NO.	TYPE	T.D. (mm)	STD. RIM	Max Load		INFLATION PRESSURE		SPEED (mpn)	S.W. (mm)	O.D. (mm)
						(lbs)	(kg)	(psi)	(kpa)			
9.00-20	16	KT882	TT	22.7	7.0	12190	5530	121	835	15	259	1018
7.50-16	16	KT882	TT	17	6.00G	11990	5440	150	1030	15	213	820
300-15	20	KT882	TT	21	8.0	13095	5940	135	930	15	300	840
250-15	18	KT882	TT	20.5	7.5	9060	4110	150	1030	15	250	735
8.25-15	16	KT882	TT	18.5	6.5	10165	4610	135	930	15	236	848
32X14.5-15	24	KT882	TL	27	11.5	10900	4945	150	1030	15	355	838
28X9-15/8.15-15	14	KT882	TT	18	7.0	6725	3050	140	970	15	221	706
7.00-15/29X8-15	14	KT882	TT	17	5.5	7495	3400	145	1000	15	200	732
8.25-12	12	KT882	TT	16.8	5.00S	4410	2000	101	700	15	210	728
7.00-12	14	KT882	TT	18	5.00S	6535	2965	145	1000	15	190	682
6.50-10	10	KT882	TT	16	5.00F	3650	1655	115	790	15	180	598
6.00/6.90-9	10	KT882	TT	17	4.00E	3315	1505	125	860	15	160	545
18X7-8	14	KT882	TT	13	4.33R	2690	1220	130	900	15	160	470
5.00-8/5.70-8	8	KT882	TT	14	3.00D	2205	1000	115	790	15	132	465
6.50-10 LTD	10	KT882A	TT	12	5.00F	3650	1655	115	790	15	175	590

SIZE	PR	PATTERN NO.	TYPE	T.D. (mm)	STD. RIM	Max Load		INFLATION PRESSURE		Speed (mph)	S.W. (mm)	O.D. (mm)
						(lbs)	(kg)	(psi)	(kg)			
50X20-20	36	KT668	TL	33	15.00	28530	12940	150	1030	5	495	1270
14.00-20	32	KT668	TT	29	10.00	22100	10025	-	-	5	375	1245
14.00-20	28	KT668	TT	29	10.00	20400	9250	140	965	5	375	1245



UNDERGROUND MINING TYRES



KT667

SIZE	PR	PATTERN NO.	TYPE	T.D. (mm)	STD. RIM	Max Load		INFLATION PRESSURE		SPEED (mpn)	S.W. (mm)	O.D. (mm)
						(lbs)	(kg)	(psi)	(kpa)			
12.00-20	28	KT667	TT	61	8.5	21845	9910	150	1030	15	320	1143

UNDERGROUND MINING TYRES



KT882

SIZE	PR	PATTERN NO.	TYPE	T.D. (mm)	STD. RIM	Max Load		INFLATION PRESSURE		SPEED (mpn)	S.W. (mm)	O.D. (mm)
						(lbs)	(kg)	(psi)	(kpa)			
45X16-20	36	ZM722	TL	47	15.00	22100	10025	150	1030	5	419	1130
42X13-20	32	ZM722	TT	25	9.00	20000	9070	-	-	5	330	1067
42X13-20	24	ZM722	TT	25	9.00	18700	8480	145	1000	5	330	1067
38X16-15	32	ZM722	TL	31	11.50	17200	7800	145	1000	5	396	1000
15L-10/27x15-10	24	ZM722	TT	24	13.00	7650	3470	125	860	5	366	704
14.50L-15/35x15-15	32	ZM722	TL	26	11.50	13905	6305	150	1030	5	358	902
14.50L-15/35x15-15	28	ZM722	TL	26	11.50	12305	5580	150	1030	5	358	902
14.50L-15/35x15-15	20	ZM722	TT	26	11.50	11315	5130	130	900	5	358	902
10.00L-15/36x11-15	24	ZM722	TT	28	7.50	10750	4875	150	1030	5	284	917
10.00L-15/36x11-15	16	ZM722	TT	28	7.50	9340	4235	115	790	5	284	917
32X14.5-15	24	ZM722	TL	27	11.50	10900	4945	150	1030	5	355	838
32X12.5-15	24	ZM722	TT	27	9.75	9150	4150	145	1000	5	310	826
28X12.5-15	28	ZM722	TT	26	9.75	7400	3355	150	1030	5	305	711
12.00-20	28	ZM722	TT	45	8.5	18500	8390	-	-	5	340	1173
12.00-20	24	ZM722	TT	45	8.5	16500	7485	145	1000	5	340	1173
10.00-20	18	ZM722	TT	40	7.5	12780	5795	130	900	5	300	1097
8.25-15	24	ZM722	TT	45	6.5	10800	4390	150	1030	5	260	856
7.50-10	16	ZM722	TT	22	5.50F	3480	1580	150	1030	5	203	647



UNDERGROUND MINING TYRES



KT998

KT999

UNDERGROUND MINING TYRES



KT699

SIZE	PR	PATTERN NO.	TYPE	T.D. (mm)	STD. RIM	Max Load (lbs) (kg)		INFLATION PRESSURE (psi) (kpa)		Speed (mph)	S.W. (mm)	O.D. (mm)
36X12.5-20	36X12.5-20	KT699	TL	33	11.00	12125	5500	123	850	20	320	930
40X12.5-20	40X12.5-20	KT699	TT		11.00	15320	6950	145	1000	20	320	1010

SIZE	PR	PATTERN NO.	TYPE	T.D. (mm)	STD. RIM	Max Load		INFLATION PRESSURE		SPEED (mpn)	S.W. (mm)	O.D. (mm)
						(lbs)	(kg)	(psi)	(kpa)			
12-16.5	14	KT998	TL	43	9.75	6780	3075	90	620	5	315	861
10-16.5	14	KT998	TL	42	8.25	6010	2725	105	725	5	270	785
12-16.5	14	KT999	TL	37	9.75	6780	3075	90	620	5	315	861
10-16.5	14	KT999	TL	36	8.25	6010	2725	105	725	5	270	785
27X8.50-15	10	KT999	TL	33	7.00	3220	1460	80	550	5	221	686
5.90-15	8	KT999	TL	26	5.00	2100	950	90	620	5	152	686
5.70-12	8	KT999	TL	20	4.50	1870	850	90	620	5	146	574



SKID STEER TYRES



KT665

KT661

SKID STEER TYRES



I-3

R-4

X-15

SIZE	PR	PATTERN NO.	TYPE	T.D. (mm)	STD. RIM	Max Load		INFLATION PRESSURE		SPEED (mpn)	S.W. (mm)	O.D. (mm)
						(lbs)	(kg)	(psi)	(kpa)			
12.5/80-18	12	I-3	TL	29	9.00	2625	1190	53	365	5	312	1004
27X10.50-15	8	R-4	TL	23	8.50	3100	1405	60	415	5	267	686
27X8.50-15	8	R-4	TL	23	7.00	2890	1310	60	415	5	221	686
23X8.50-12	8	R-4	TL	18	7.00	2030	920	60	415	5	221	596
12-16.5RG	12	R-4	TL	26	9.75	6320	2865	80	550	5	321	820
12-16.5	10	R-4	TL	17	9.75	5600	2540	65	450	5	321	820
10-16.5RG	10	R-4	TL	24	8.25	4710	2135	75	520	5	274	774
10-16.5	8	R-4	TL	16	8.25	4140	1880	60	415	5	274	774
26X12.00-12	12	X-15	TL	27	10.50	4280	1940	75	520	5	300	670
31X15.5-15	12	X-15	TL	26	13.00	4630	2100	60	415	5	402	802

SIZE	PR	PATTERN NO.	TYPE	T.D. (mm)	STD. RIM	Max Load		INFLATION PRESSURE		SPEED (mpn)	S.W. (mm)	O.D. (mm)
						(lbs)	(kg)	(psi)	(kpa)			
26X12.00-12	8	KT665	TL	19	10.50	3020	1370	51	350	5	309	670
29X12.5-15	8	KT665	TL	21.5	10.00	4300	1950	46	320	5	325	770
31X15.5-15	8	KT665	TL	19	13.00	4365	1980	45	310	5	402	802
29X12.5-15	8	KT661	TL	13	10.00	4300	1950	46	320	5	320	750



OTHERS